



▼ Charaterastic

Neon Flex 3D Bend: Endless Brilliance in any Shape

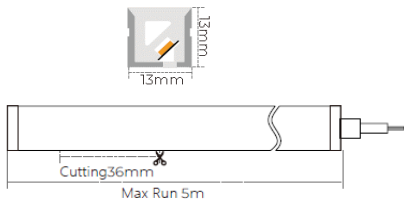
1. Bend & Install Your Way: Whole or cut-to-size for a perfect fit (no extra parts, maintains IP67 weatherproofing). Flexible even in extreme weather (-10° to +40°C).
2. 3D Creativity: Bends and curves on various surfaces, from flat walls to complex structures.
3. Durable & Vibrant: Eco-friendly materials and UV resistance for lasting beauty. T-shaped, 6mm light surface delivers flawless linear illumination. (Combines durability and lighting aspects)
4. Built Tough: IP67 rating protects against harsh environments: saltwater, chemicals, corrosion, flames, and UV rays.

▼ Application

!+Infrastructure: Airport ,Railway Station ,Bridge , Municipal building ,Tunnel

!+Urban: Administrative Building , Commercial Building , Hotel , Mall

!+Cultural and Entertainment: Pavilion , Plaza ,Village ,Amusement park ,Monuments ,Cathedral ,Heritage site



▼ "Non-dim/dim" and "Mono/Tunable white/chromatic" is available, Pls confirm before ordering.



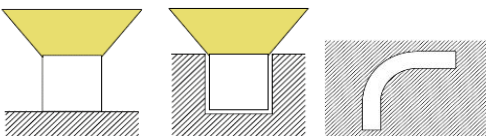
ON/OFF 0-10V DALI DMX TRIAC

▼ Technical Data

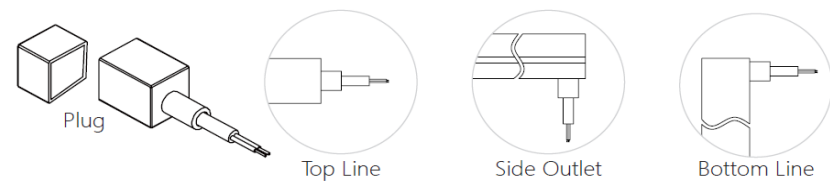
Model	SIZE (mm)	BENDING DIRECTION	POWER (W/M)	CRI	CCT (K)	LUMINOUS (LM/M)	VOLT	Control	CUTTING (mm)	Remark
NEON-06A	13*13mm	3D Bending	7/14	>80	Mono 2700-6000K	500-700	DC24V	ON/OFF	36	standard 3pc clips/M

▼ Installation Method

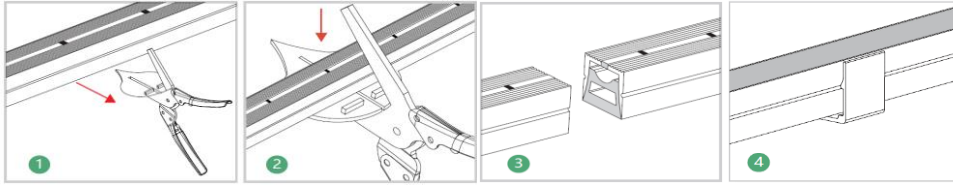
1. Surface Mounted
2. Recessed Mounted



▼ Outlet Method



▼ Cutting Method



Step 1: Where you see the cut line in the window, place the casing into the scissor opening.

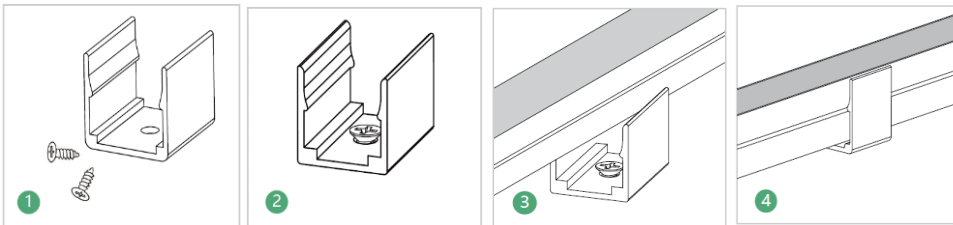
Step 2: Cut the casing with the scissors.

Step 3: After cutting.

Step 4: Finished.

▼ Available Accessories

Option 1: Short Aluminum Clip (1 meter with 5) (with screws)



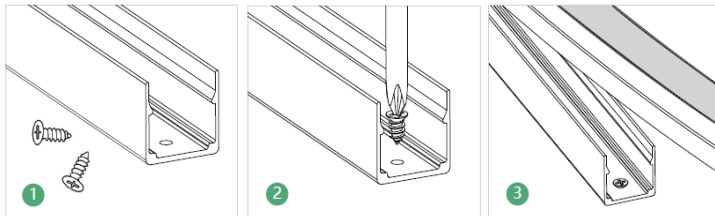
Step 1: Prepare the screws and clips.

Step 2: Adjust the clips to the proper position. Use a screwdriver to drive in the screws to secure them.

Step 3: Place the light body with the light emitting side facing upwards and apply pressure. Installation is complete.

Step 4: Set the light bar into the snap.

Option 2: Aluminum Profile (with screws)

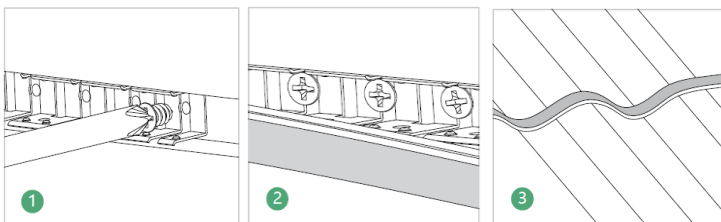


Step 1: Prepare the screws and profiles.

Step 2: Adjust the aluminium profile to the right place. Drive in the screws with a screwdriver.

Step 3: Set the light bar, luminous side up, into the aluminium profile.

Option 3: Flexible Stainless Steel Chain



Step 1: Fix the bendable profile with screws into the moulding groove opened beforehand.

Step 2: Install the light bar with its luminous side facing outwards into the slot for fixing.

Step 3: Completion of the installation

Option 4: End Cap Set (One End Cap+One Plug Straight Outlet)

Option 5: Metal End Cap Set (One End Cap+One Plug Straight Outlet)