

### ▼ Charaterastic

Neon Flex Three Side Top Bend: Effortless Brilliance

1. Flexible & Easy Install: Installs whole or cuts to size for customization (maintains IP67 rating) - no extra parts needed.
2. Durable & Weatherproof (IP67): Eco-friendly, UV-resistant silicone construction ensures long-lasting vibrancy and withstands harsh environments.
3. Uniform Linear Illumination: Three-sided light emission delivers consistent brightness across the entire length.
4. High Light Transmittance: Up to brighter for exceptional illumination.



### ▼ Application

I + **Infrastructure**: Airport ,Railway Station ,Bridge , Municipal building , Tunnel

I + **Urban**: Administrative Building , Commercial Building , Hotel , Mall

I + **Cultural and Entertainment**: Pavilion , Plaza ,Village ,Amusement park ,Monuments ,Cathedral ,Heritage site

▼ "Non-dim/dim" and "Mono/Tunable white/chromatic" is available, Pls confirm before ordering.



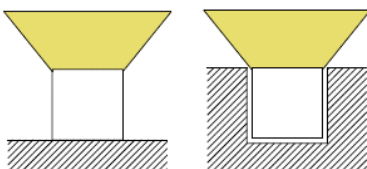
**ON/OFF 0-10V DALI DMX TRIAC**

### ▼ Family Matrix (Three difference size)

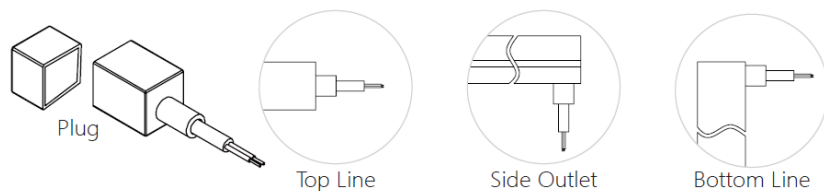


### ▼ Installation Method

1. Surface Mounted
2. Recessed Mounted



### ▼ Outlet Method

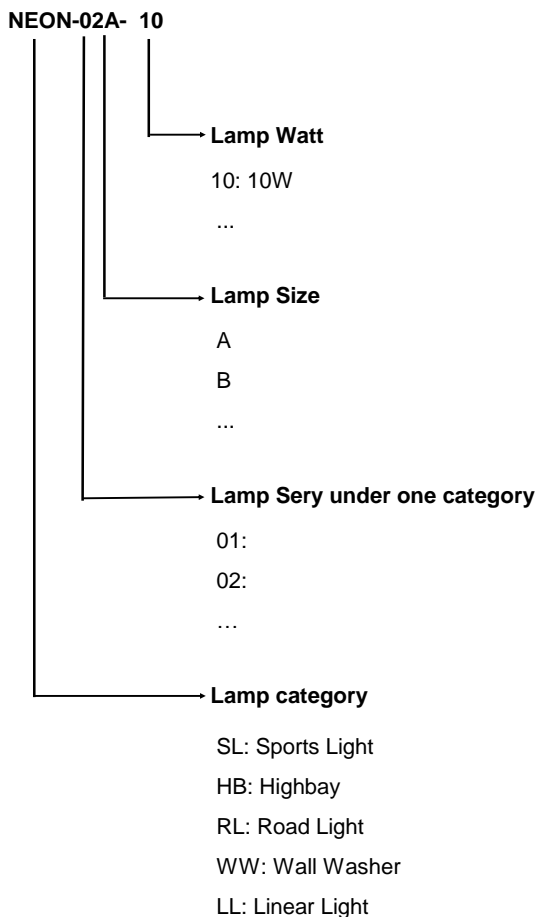


### ▼ Technical Data (full sery)

Model	SIZE (mm)	BENDING DIRECTION	POWER (W/M)	CRI	CCT (K)	LUMINOUS (LM/M)	VOLT	Control	CUTTING (mm)	Remark
NEON-02A	10*10mm	Top Bending (Φ > 80-120mm)	6/8/10	>80	Mono 2700-6000K	420~700	DC24V	ON/OFF	36	standard 3pc clips/M
NEON-02A	10*10mm	Top Bending (Φ > 80-120mm)	6/8/10	>80	Tunable white 2700-6000K	420~700	DC24V	DMX	36	standard 3pc clips/M
NEON-02A	10*10mm	Top Bending (Φ > 80-120mm)	6/8/10	/	chromatic (RGB or RGBW)	200~300	DC24V	DMX	36	standard 3pc clips/M
NEON-02B	13*13mm	Top Bending (Φ > 80-120mm)	6/8/10	>80	Mono 2700-6000K	420~700	DC24V	ON/OFF	36	standard 3pc clips/M
NEON-02B	13*13mm	Top Bending (Φ > 80-120mm)	6/8/10	>80	Tunable white 2700-6000K	420~700	DC24V	DMX	36	standard 3pc clips/M
NEON-02B	13*13mm	Top Bending (Φ > 80-120mm)	6/8/10	/	chromatic (RGB or RGBW)	200~300	DC24V	DMX	36	standard 3pc clips/M
NEON-02C	16*16mm	Top Bending (Φ > 80-120mm)	6/8/10	>80	Mono 2700-6000K	420~700	DC24V	ON/OFF	50	standard 3pc clips/M
NEON-02C	16*16mm	Top Bending (Φ > 80-120mm)	6/8/10	>80	Tunable white 2700-6000K	420~700	DC24V	DMX	50	standard 3pc clips/M
NEON-02C	16*16mm	Top Bending (Φ > 80-120mm)	6/8/10	/	chromatic (RGB or RGBW)	200~300	DC24V	DMX	50	standard 3pc clips/M

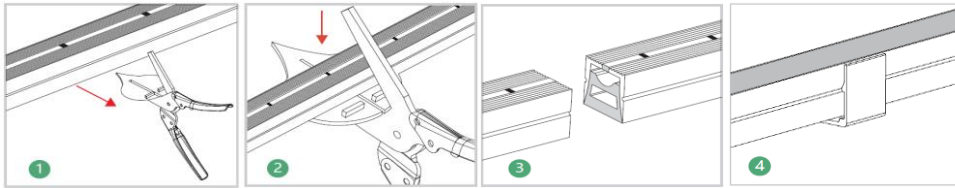
Notes: Mono (2700K,3000K,3500K,4000K,4500K,5000K, Red, Green, Blue, Amber), Tunable White (2700K~5000K), Chromatic (RGB, RGBW)

### ▼ Naming scheme





### ▼ Cutting Method



Step 1: Where you see the cut line in the window, place the casing into the scissor opening.

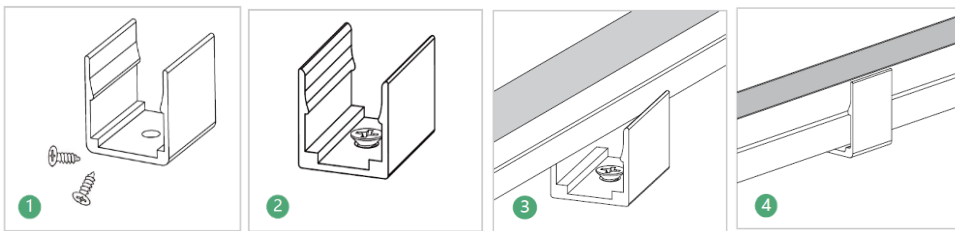
Step 2: Cut the casing with the scissors.

Step 3: After cutting.

Step 4: Finished.

### ▼ Available Accessories

#### Option 1: Short Aluminum Clip (1 meter with 5) (with screws)



Step 1: Prepare the screws and clips.

Step 2: Adjust the clips to the proper position. Use a screwdriver to drive in the screws to secure them.

Step 3: Place the light body with the light emitting side facing upwards and apply pressure. Installation is complete.

Step 4: Set the light bar into the snap.

#### Option 2: Aluminum Profile (with screws)

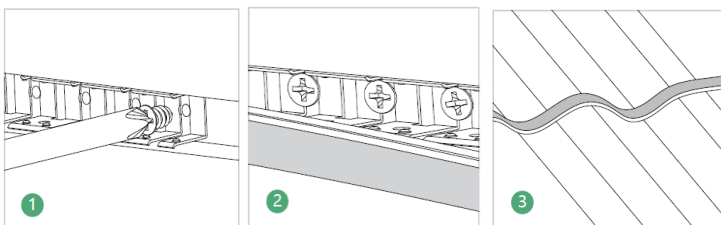


Step 1: Prepare the screws and profiles.

Step 2: Adjust the aluminium profile to the right place. Drive in the screws with a screwdriver.

Step 3: Set the light bar, luminous side up, into the aluminium profile.

#### Option 3: Flexible Stainless Steel Chain



Step 1: Fix the bendable profile with screws into the moulding groove opened beforehand.

Step 2: Install the light bar with its luminous side facing outwards into the slot for fixing.

Step 3: Completion of the installation

#### Option 4: End Cap Set (One End Cap+One Plug Straight Outlet)

#### Option 5: Metal End Cap Set (One End Cap+One Plug Straight Outlet)

▼ Project of Neon Three -sided Emission



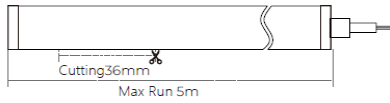
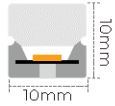
▼ 1010



### ▼ Charateristic

Neon Flex Three Side Top Bend: Effortless Brilliance

1. Flexible & Easy Install: Installs whole or cuts to size for customization (maintains IP67 rating) - no extra parts needed.
2. Durable & Weatherproof (IP67): Eco-friendly, UV-resistant silicone construction ensures long-lasting vibrancy and withstands harsh environments.
3. Uniform Linear Illumination: Three-sided light emission delivers consistent brightness across the entire length.
4. High Light Transmittance: Up to brighter for exceptional illumination.



### ▼ Application

I+Infrastructure: Airport ,Railway Station ,Bridge , Municipal building ,Tunnel

I+Urban: Administrative Building , Commercial Building , Hotel , Mall

I+Cultural and Entertainment: Pavilion , Plaza ,Village ,Amusement park ,Monuments ,Cathedral ,Heritage site

▼ "Non-dim/dim" and "Mono/Tunable white/chromatic" is available, Pls confirm before ordering.



ON/OFF 0-10V DALI DMX TRIAC

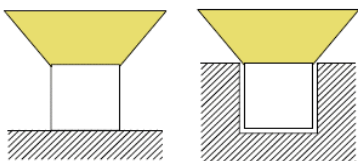
### ▼ Technical Data

Model	SIZE (mm)	BENDING DIRECTION	POWER (W/M)	CRI	CCT (K)	LUMINOUS (LM/M)	VOLT	Control	CUTTING (mm)	Remark
NEON-02A	10*10mm	Top Bending (Φ > 80-120mm)	6/8/10	>80	Mono 2700-6000K	420~700	DC24V	ON/OFF	36	standard 3pc clips/M
NEON-02A	10*10mm	Top Bending (Φ > 80-120mm)	6/8/10	>80	Tunable white 2700-6000K	420~700	DC24V	DMX	36	standard 3pc clips/M
NEON-02A	10*10mm	Top Bending (Φ > 80-120mm)	6/8/10	/	chromatic (RGB or RGBW)	200~300	DC24V	DMX	36	standard 3pc clips/M

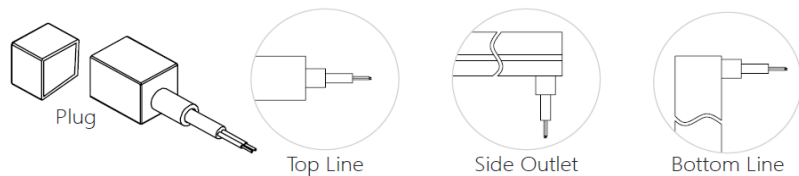
Notes: Mono (2700K,3000K,3500K,4000K,4500K,5000K, Red, Green, Blue, Amber), Tunable White (2700K~5000K), Chromatic (RGB, RGBW)

### ▼ Installation Method

1. Surface Mounted
2. Recessed Mounted



### ▼ Outlet Method



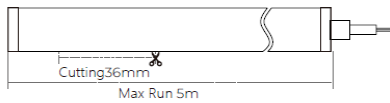
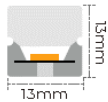
▼ 1313



### ▼ Charateristic

Neon Flex Three Side Top Bend: Effortless Brilliance

1. Flexible & Easy Install: Installs whole or cuts to size for customization (maintains IP67 rating) - no extra parts needed.
2. Durable & Weatherproof (IP67): Eco-friendly, UV-resistant silicone construction ensures long-lasting vibrancy and withstands harsh environments.
3. Uniform Linear Illumination: Three-sided light emission delivers consistent brightness across the entire length.
4. High Light Transmittance: Up to brighter for exceptional illumination.



### ▼ Application

I+Infrastructure: Airport ,Railway Station ,Bridge , Municipal building ,Tunnel

I+Urban: Administrative Building , Commercial Building , Hotel , Mall

I+Cultural and Entertainment: Pavilion , Plaza ,Village ,Amusement park ,Monuments ,Cathedral ,Heritage site

▼ "Non-dim/dim" and "Mono/Tunable white/chromatic" is available, Pls confirm before ordering.



ON/OFF 0-10V DALI DMX TRIAC

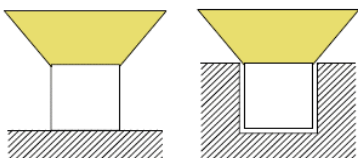
### ▼ Technical Data

Model	SIZE (mm)	BENDING DIRECTION	POWER (W/M)	CRI	CCT (K)	LUMINOUS (LM/M)	VOLT	Control	CUTTING (mm)	Remark
NEON-02B	13*13mm	Top Bending (Φ > 80-120mm)	6/8/10	>80	Mono 2700-6000K	420~700	DC24V	ON/OFF	36	standard 3pc clips/M
NEON-02B	13*13mm	Top Bending (Φ > 80-120mm)	6/8/10	>80	Tunable white 2700-6000K	420~700	DC24V	DMX	36	standard 3pc clips/M
NEON-02B	13*13mm	Top Bending (Φ > 80-120mm)	6/8/10	/	chromatic (RGB or RGBW)	200~300	DC24V	DMX	36	standard 3pc clips/M

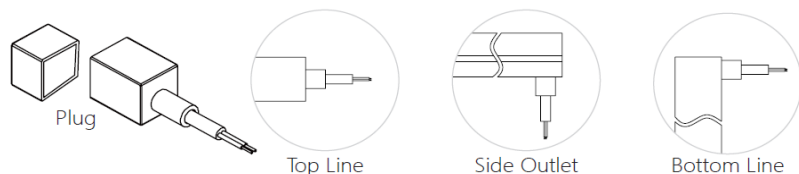
Notes: Mono (2700K,3000K,3500K,4000K,4500K,5000K, Red, Green, Blue, Amber), Tunable White (2700K~5000K), Chromatic (RGB, RGBW)

### ▼ Installation Method

1. Surface Mounted
2. Recessed Mounted



### ▼ Outlet Method



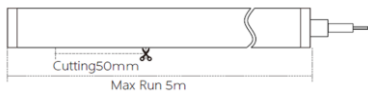
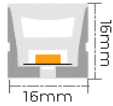
▼ 1616



### ▼ Charaterastic

Neon Flex Three Side Top Bend: Effortless Brilliance

1. Flexible & Easy Install: Installs whole or cuts to size for customization (maintains IP67 rating) - no extra parts needed.
2. Durable & Weatherproof (IP67): Eco-friendly, UV-resistant silicone construction ensures long-lasting vibrancy and withstands harsh environments.
3. Uniform Linear Illumination: Three-sided light emission delivers consistent brightness across the entire length.
4. High Light Transmittance: Up to brighter for exceptional illumination.



### ▼ Application

I+ **Infrastructure:** Airport ,Railway Station ,Bridge , Municipal building ,Tunnel

I+ **Urban:** Administrative Building , Commercial Building , Hotel , Mall

I+ **Cultural and Entertainment:** Pavilion , Plaza ,Village ,Amusement park ,Monuments ,Cathedral ,Heritage site

▼ "Non-dim/dim" and "Mono/Tunable white/chromatic" is available, Pls confirm before ordering.



**ON/OFF 0-10V DALI DMX TRIAC**

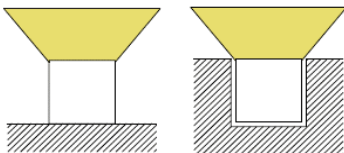
### ▼ Technical Data

Model	SIZE (mm)	BENDING DIRECTION	POWER (W/M)	CRI	CCT (K)	LUMINOUS (LM/M)	VOLT	Control	CUTTING (mm)	Remark
NEON-02C	16*16mm	Top Bending (Φ > 80-120mm)	6/8/10	>80	Mono 2700-6000K	420~700	DC24V	ON/OFF	50	standard 3pc clips/M
NEON-02C	16*16mm	Top Bending (Φ > 80-120mm)	6/8/10	>80	Tunable white 2700-6000K	420~700	DC24V	DMX	50	standard 3pc clips/M
NEON-02C	16*16mm	Top Bending (Φ > 80-120mm)	6/8/10	/	chromatic (RGB or RGBW)	200~300	DC24V	DMX	50	standard 3pc clips/M

Notes: Mono (2700K,3000K,3500K,4000K,4500K,5000K, Red, Green, Blue, Amber), Tunable White (2700K~5000K), Chromatic (RGB, RGBW)

### ▼ Installation Method

1. Surface Mounted
2. Recessed Mounted



### ▼ Outlet Method

