

▼ Charateristic

Neon Flex Dome Side Bend: Effortlessly Brilliant

1. Bend & Install Your Way: Whole or cut-to-size for a perfect fit (no extra parts, maintains IP67 weatherproofing). Works even in harsh weather (-10° to +40°C).
2. Durable & Vibrant: Eco-friendly materials and UV resistance ensure lasting brightness and beauty. Compact design with a 6mm curved light surface delivers flawless linear illumination.
3. Built Tough: IP67 rating protects against saltwater, harsh chemicals, corrosion, flames, and UV rays.

▼ Application

I+Infrastructure: Airport ,Railway Station ,Bridge , Municipal building ,Tunnel

I+Urban: Administrative Building , Commercial Building , Hotel , Mall

I+Cultural and Entertainment: Pavilion , Plaza ,Village ,Amusement park ,Monuments ,Cathedral ,Heritage site

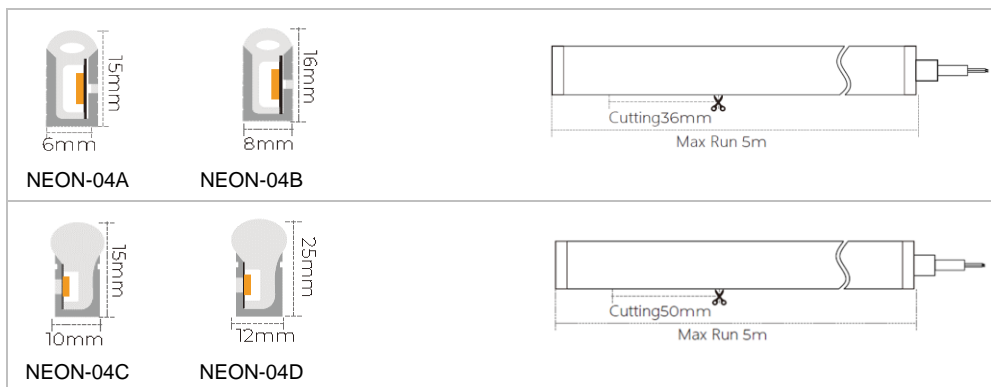
▼ "Non-dim/dim" and "Mono/Tunable white/chromatic" is available, Pls confirm before ordering.



ON/OFF 0-10V DALI DMX TRIAC

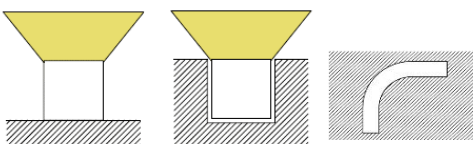


▼ Family Matrix (Four difference size)

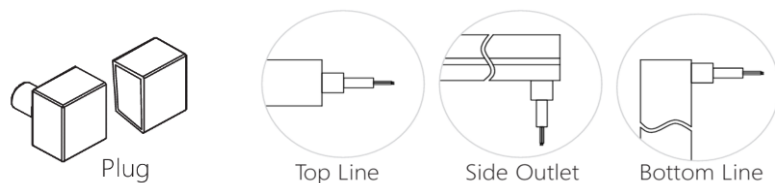


▼ Installation Method

1. Surface Mounted
2. Recessed Mounted



▼ Outlet Method

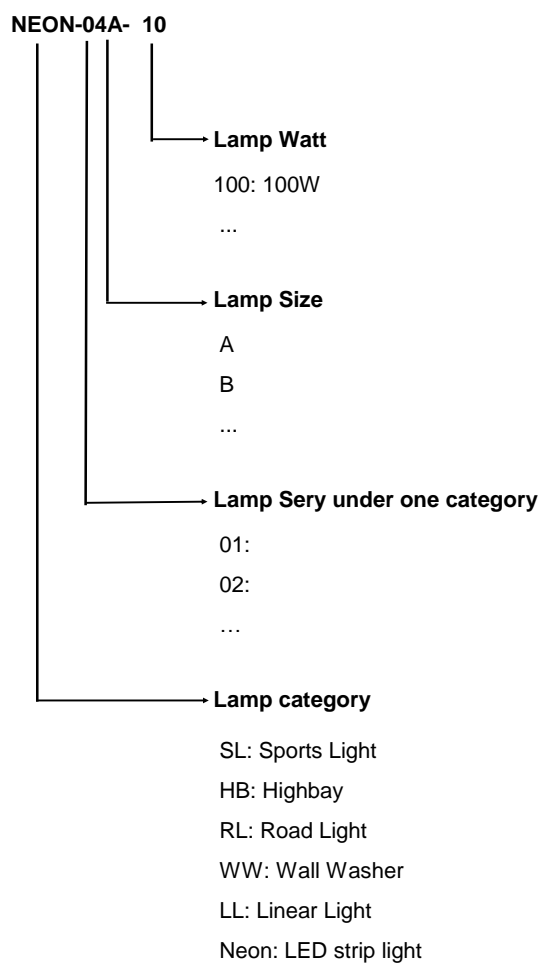


▼ **Technical Data** (full sery)

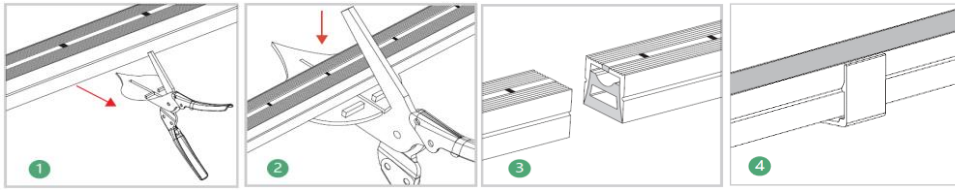
Model	SIZE (mm)	BENDING DIRECTION	POWER (W/M)	CRI	CCT (K)	LUMINOUS (LM/M)	VOLT	Control	CUTTING (mm)	Remark
NEON-04A	6*15mm	Side Bending (Φ > 60-80mm)	6/8/10	>80	Mono 2700-6000K	500-700	DC24V	ON/OFF	36	standard 3pc clips/M
NEON-04B	8*16mm	Side Bending (Φ > 60-80mm)	6/8/10	>80	Mono 2700-6000K	500-700	DC24V	ON/OFF	36	standard 3pc clips/M
NEON-04B	8*16mm	Side Bending (Φ > 60-80mm)	6/8/10	>80	Tunable white 2700-6000K	500-700	DC24V	DMX	36	standard 3pc clips/M
NEON-04B	8*16mm	Side Bending (Φ > 60-80mm)	6/8/10	/	chromatic (RGB or RGBW)	180-300	DC24V	DMX	36	standard 3pc clips/M
NEON-04C	10*15mm	Top Bending (Φ > 80-120mm)	10/12/15	>80	Mono 2700-6000K	700-950	DC24V	ON/OFF	50	standard 3pc clips/M
NEON-04C	10*15mm	Top Bending (Φ > 80-120mm)	10/12/15	>80	Tunable white 2700-6000K	700-950	DC24V	DMX	50	standard 3pc clips/M
NEON-04C	10*15mm	Top Bending (Φ > 80-120mm)	10/12/15	/	chromatic (RGB or RGBW)	300-450	DC24V	DMX	50	standard 3pc clips/M
NEON-04D	12*25mm	Top Bending (Φ > 80-120mm)	10/12/15	>80	Mono 2700-6000K	700-950	DC24V	ON/OFF	50	standard 3pc clips/M
NEON-04D	12*25mm	Top Bending (Φ > 80-120mm)	10/12/15	>80	Tunable white 2700-6000K	700-950	DC24V	DMX	50	standard 3pc clips/M
NEON-04D	12*25mm	Top Bending (Φ > 80-120mm)	10/12/15	/	chromatic (RGB or RGBW)	300-450	DC24V	DMX	50	standard 3pc clips/M

Notes: Mono (2700K,3000K,3500K,4000K,4500K,5000K, Red, Green, Blue, Amber), Tunable White (2700K~5000K), Chromatic (RGB, RGBW)

▼ Naming scheme



▼ Cutting Method



Step 1: Where you see the cut line in the window, place the casing into the scissor opening.

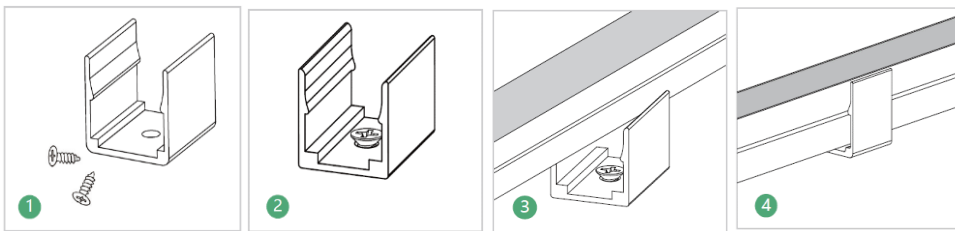
Step 2: Cut the casing with the scissors.

Step 3: After cutting.

Step 4: Finished.

▼ Available Accessories

Option 1: Short Aluminum Clip (1 meter with 5) (with screws)



Step 1: Prepare the screws and clips.

Step 2: Adjust the clips to the proper position. Use a screwdriver to drive in the screws to secure them.

Step 3: Place the light body with the light emitting side facing upwards and apply pressure. Installation is complete.

Step 4: Set the light bar into the snap.

Option 2: Aluminum Profile (with screws)

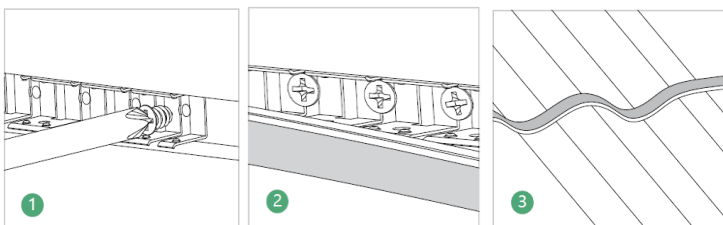


Step 1: Prepare the screws and profiles.

Step 2: Adjust the aluminium profile to the right place. Drive in the screws with a screwdriver.

Step 3: Set the light bar, luminous side up, into the aluminium profile.

Option 3: Flexible Stainless Steel Chain



Step 1: Fix the bendable profile with screws into the moulding groove opened beforehand.

Step 2: Install the light bar with its luminous side facing outwards into the slot for fixing.

Step 3: Completion of the installation

Option 4: End Cap Set (One End Cap+One Plug Straight Outlet)

Option 5: Metal End Cap Set (One End Cap+One Plug Straight Outlet)

▼ Project of Neon T Shape Emission



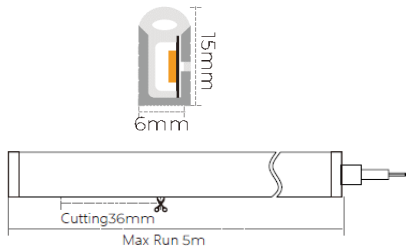
▼ 0615



▼ Charateristic

Neon Flex Dome Side Bend: Effortlessly Brilliant

1. Bend & Install Your Way: Whole or cut-to-size for a perfect fit (no extra parts, maintains IP67 weatherproofing). Works even in harsh weather (-10° to +40°C).
2. Durable & Vibrant: Eco-friendly materials and UV resistance ensure lasting brightness and beauty. Compact design with a 6mm curved light surface delivers flawless linear illumination.
3. Built Tough: IP67 rating protects against saltwater, harsh chemicals, corrosion, flames, and UV rays.



▼ Application

I+Infrastructure: Airport ,Railway Station ,Bridge , Municipal building ,Tunnel

I+Urban: Administrative Building , Commercial Building , Hotel , Mall

I+Cultural and Entertainment: Pavilion , Plaza ,Village ,Amusement park ,Monuments ,Cathedral ,Heritage site

▼ "Non-dim/dim" and "Mono/Tunable white/chromatic" is available, Pls confirm before ordering.



ON/OFF 0-10V DALI DMX TRIAC

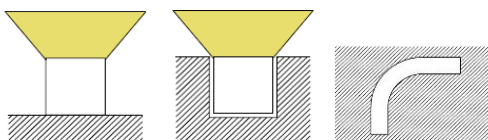
▼ Technical Data

Model	SIZE (mm)	BENDING DIRECTION	POWER (W/M)	CRI	CCT (K)	LUMINOUS (LM/M)	VOLT	Control	CUTTING (mm)	Remark
NEON-04A	6*15mm	Side Bending (Φ > 60-80mm)	6/8/10	>80	Mono 2700-6000K	500-700	DC24V	ON/OFF	36	standard 3pc clips/M

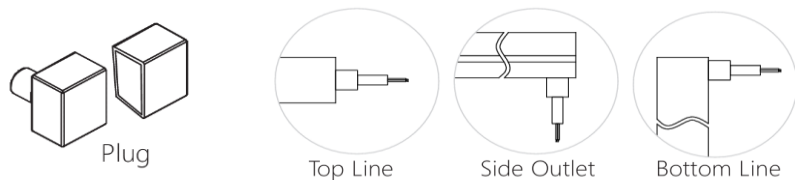
Notes: Mono (2700K,3000K,3500K,4000K,4500K,5000K, Red, Green, Blue, Amber), Tunable White (2700K~5000K), Chromatic (RGB, RGBW)

▼ Installation Method

1. Surface Mounted
2. Recessed Mounted



▼ Outlet Method





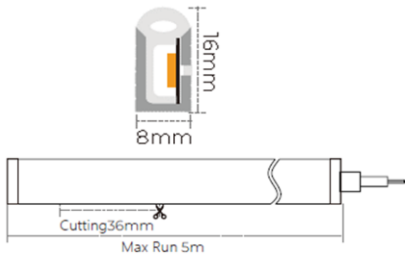
▼ Charaterastic



Neon Flex Dome Side Bend: Effortlessly Brilliant

1. Bend & Install Your Way: Whole or cut-to-size for a perfect fit (no extra parts, maintains IP67 weatherproofing). Works even in harsh weather (-10° to +40°C).
2. Durable & Vibrant: Eco-friendly materials and UV resistance ensure lasting brightness and beauty. Compact design with a 6mm curved light surface delivers flawless linear illumination.
3. Built Tough: IP67 rating protects against saltwater, harsh chemicals, corrosion, flames, and UV rays.

▼ Application



I+Infrastructure: Airport ,Railway Station ,Bridge , Municipal building ,Tunnel

I+Urban: Administrative Building , Commercial Building , Hotel , Mall

I+Cultural and Entertainment: Pavilion , Plaza ,Village ,Amusement park ,Monuments ,Cathedral ,Heritage site

▼ "Non-dim/dim" and "Mono/Tunable white/chromatic" is available, Pls confirm before ordering.



ON/OFF 0-10V DALI DMX TRIAC

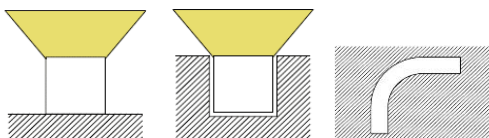
▼ Technical Data

Model	SIZE (mm)	BENDING DIRECTION	POWER (W/M)	CRI	CCT (K)	LUMINOUS (LM/M)	VOLT	Control	CUTTING (mm)	Remark
NEON-04B	8*16mm	Side Bending (Φ > 60-80mm)	6/8/10	>80	Mono 2700-6000K	500-700	DC24V	ON/OFF	36	standard 3pc clips/M
NEON-04B	8*16mm	Side Bending (Φ > 60-80mm)	6/8/10	>80	Tunable white 2700-6000K	500-700	DC24V	DMX	36	standard 3pc clips/M
NEON-04B	8*16mm	Side Bending (Φ > 60-80mm)	6/8/10	/	chromatic (RGB or RGBW)	180-300	DC24V	DMX	36	standard 3pc clips/M

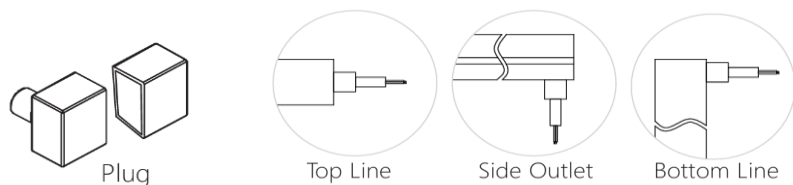
Notes: Mono (2700K,3000K,3500K,4000K,4500K,5000K, Red, Green, Blue, Amber), Tunable White (2700K~5000K), Chromatic (RGB, RGBW)

▼ Installation Method

1. Surface Mounted
2. Recessed Mounted



▼ Outlet Method



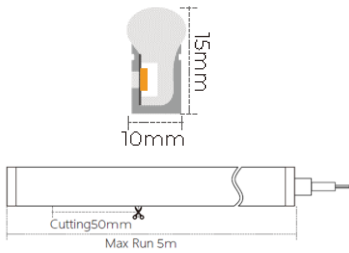
▼ 1015



▼ Charateristic

Neon Flex Dome Side Bend: Effortlessly Brilliant

1. Bend & Install Your Way: Whole or cut-to-size for a perfect fit (no extra parts, maintains IP67 weatherproofing). Works even in harsh weather (-10° to +40°C).
2. Durable & Vibrant: Eco-friendly materials and UV resistance ensure lasting brightness and beauty. Compact design with a 6mm curved light surface delivers flawless linear illumination.
3. Built Tough: IP67 rating protects against saltwater, harsh chemicals, corrosion, flames, and UV rays.



▼ Application

I+Infrastructure: Airport ,Railway Station ,Bridge , Municipal building ,Tunnel

I+Urban: Administrative Building , Commercial Building , Hotel , Mall

I+Cultural and Entertainment: Pavilion , Plaza ,Village ,Amusement park ,Monuments ,Cathedral ,Heritage site

▼ "Non-dim/dim" and "Mono/Tunable white/chromatic" is available, Pls confirm before ordering.



ON/OFF 0-10V DALI DMX TRIAC

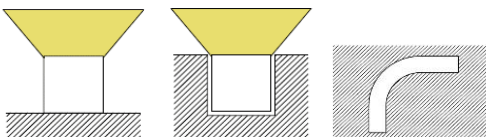
▼ Technical Data

Model	SIZE (mm)	BENDING DIRECTION	POWER (W/M)	CRI	CCT (K)	LUMINOUS (LM/M)	VOLT	Control	CUTTING (mm)	Remark
NEON-04C	10*15mm	Top Bending (Φ > 80-120mm)	10/12/15	>80	Mono 2700-6000K	700-950	DC24V	ON/OFF	50	standard 3pc clips/M
NEON-04C	10*15mm	Top Bending (Φ > 80-120mm)	10/12/15	>80	Tunable white 2700-6000K	700-950	DC24V	DMX	50	standard 3pc clips/M
NEON-04C	10*15mm	Top Bending (Φ > 80-120mm)	10/12/15	/	chromatic (RGB or RGBW)	300-450	DC24V	DMX	50	standard 3pc clips/M

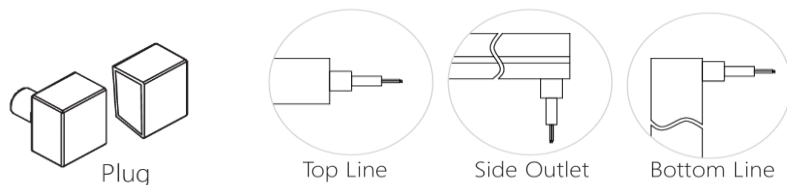
Notes: Mono (2700K,3000K,3500K,4000K,4500K,5000K, Red, Green, Blue, Amber), Tunable White (2700K~5000K), Chromatic (RGB, RGBW)

▼ Installation Method

1. Surface Mounted
2. Recessed Mounted



▼ Outlet Method



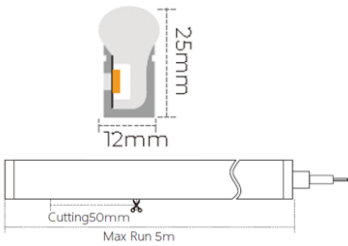
▼ 1225



▼ Charaterastic

Neon Flex Dome Side Bend: Effortlessly Brilliant

1. Bend & Install Your Way: Whole or cut-to-size for a perfect fit (no extra parts, maintains IP67 weatherproofing). Works even in harsh weather (-10° to +40°C).
2. Durable & Vibrant: Eco-friendly materials and UV resistance ensure lasting brightness and beauty. Compact design with a 6mm curved light surface delivers flawless linear illumination.
3. Built Tough: IP67 rating protects against saltwater, harsh chemicals, corrosion, flames, and UV rays.



▼ Application

I+Infrastructure: Airport ,Railway Station ,Bridge , Municipal building ,Tunnel

I+Urban: Administrative Building , Commercial Building , Hotel , Mall

I+Cultural and Entertainment: Pavilion , Plaza ,Village ,Amusement park ,Monuments ,Cathedral ,Heritage site

▼ "Non-dim/dim" and "Mono/Tunable white/chromatic" is available, Pls confirm before ordering.



ON/OFF 0-10V DALI DMX TRIAC

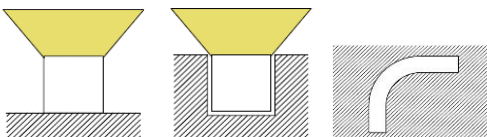
▼ Technical Data

Model	SIZE (mm)	BENDING DIRECTION	POWER (W/M)	CRI	CCT (K)	LUMINOUS (LM/M)	VOLT	Control	CUTTING (mm)	Remark
NEON-04D	12*25mm	Top Bending (Φ > 80-120mm)	10/12/15	>80	Mono 2700-6000K	700-950	DC24V	ON/OFF	50	standard 3pc clips/M
NEON-04D	12*25mm	Top Bending (Φ > 80-120mm)	10/12/15	>80	Tunable white 2700-6000K	700-950	DC24V	DMX	50	standard 3pc clips/M
NEON-04D	12*25mm	Top Bending (Φ > 80-120mm)	10/12/15	/	chromatic (RGB or RGBW)	300-450	DC24V	DMX	50	standard 3pc clips/M

Notes: Mono (2700K,3000K,3500K,4000K,4500K,5000K, Red, Green, Blue, Amber), Tunable White (2700K~5000K), Chromatic (RGB, RGBW)

▼ Installation Method

1. Surface Mounted
2. Recessed Mounted



▼ Outlet Method

