

▼ Characteristic

Neon Flex Top Bend: Effortless Brilliance

1. Easy, Flexible Installation:

Installs whole for simple setup (no extra parts needed).

Cuts to size for customized applications.

Maintains IP67 weatherproof rating even when cut (with proper accessories).

2. Durable and Long-Lasting:

Made with UV-resistant polyurethane for lasting color and aesthetics.

Withstands harsh environments (thanks to the IP67 rating).

3. Flawless Linear Lighting:

Delivers consistent, uniform light output along the entire length. (You can remove "all long" as it's redundant with "entire length")

▼ Application

I+ **Infrastructure:** Airport ,Railway Station ,Bridge , Municipal building ,Tunnel

I+ **Urban:** Administrative Building , Commercial Building , Hotel , Mall

I+ **Cultural and Entertainment:** Pavilion , Plaza ,Village ,Amusement park ,Monuments ,Cathedral ,Heritage site

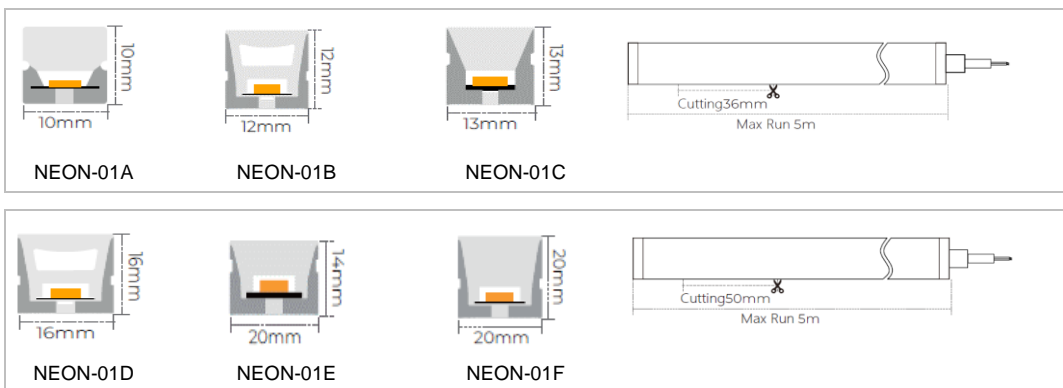
▼ "Non-dim/dim" and "Mono/Tunable white/chromatic" is available,
Pls confirm before ordering.



ON/OFF 0-10V DALI DMX TRIAC

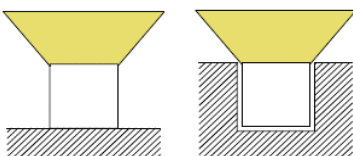


▼ Family Matrix (Six difference size)

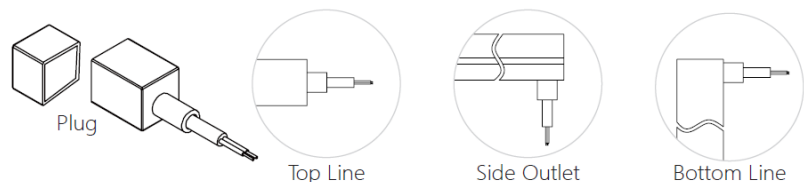


▼ Installation Method

1. Surface Mounted 2. Recessed Mounted



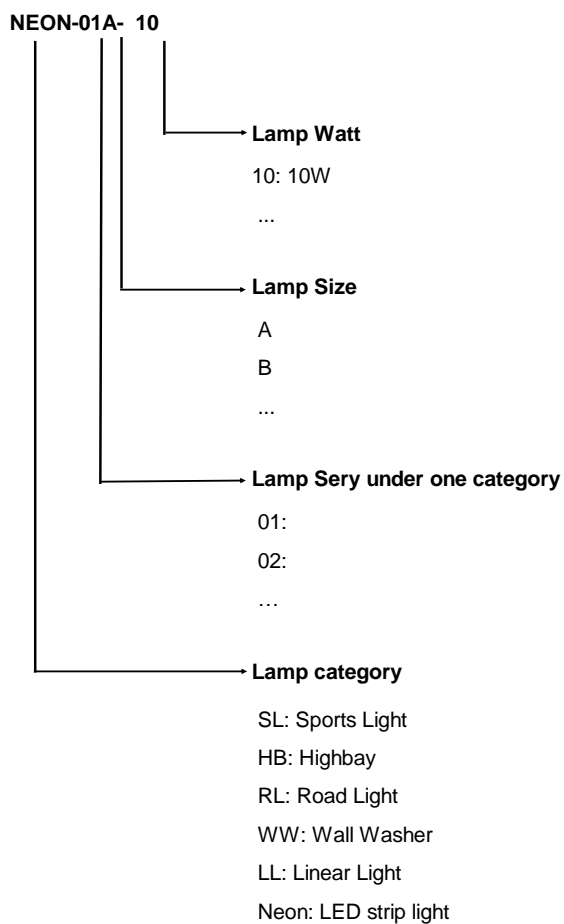
▼ Outlet Method



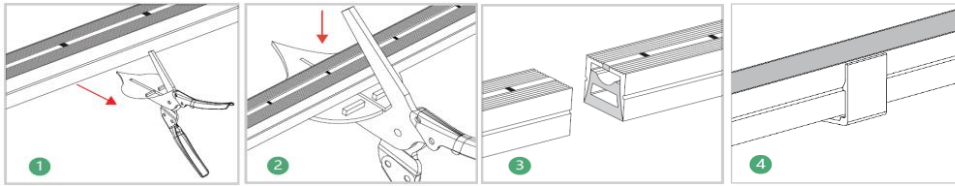
▼ Technical Data (full sery)

Model	SIZE (mm)	BENDING DIRECTION	POWER (W/M)	CRI	CCT (K)	LUMINOUS (LM/M)	VOLT	Control	CUTTING (mm)	Remark
NEON-01A	10*10mm	Top Bending (Φ > 80-120mm)	6/8/10	>80	Mono 2700-6000K	420~700	DC24V	ON/OFF	36	standard 3pc clips/M
NEON-01A	10*10mm	Top Bending (Φ > 80-120mm)	6/8/10	>80	Tunable white 2700-6000K	420~700	DC24V	DMX	36	standard 3pc clips/M
NEON-01A	10*10mm	Top Bending (Φ > 80-120mm)	6/8/10	/	chromatic (RGB or RGBW)	200~300	DC24V	DMX	36	standard 3pc clips/M
NEON-01B	12*12mm	Top Bending (Φ > 80-120mm)	6/8/10	>80	Mono 2700-6000K	420~700	DC24V	ON/OFF	36	standard 3pc clips/M
NEON-01B	12*12mm	Top Bending (Φ > 80-120mm)	6/8/10	>80	Tunable white 2700-6000K	420~700	DC24V	DMX	36	standard 3pc clips/M
NEON-01B	12*12mm	Top Bending (Φ > 80-120mm)	6/8/10	/	chromatic (RGB or RGBW)	200~300	DC24V	DMX	36	standard 3pc clips/M
NEON-01C	13*13mm	Top Bending (Φ > 80-120mm)	6/8/10	>80	Mono 2700-6000K	420~700	DC24V	ON/OFF	36	standard 3pc clips/M
NEON-01C	13*13mm	Top Bending (Φ > 80-120mm)	6/8/10	>80	Tunable white 2700-6000K	420~700	DC24V	DMX	36	standard 3pc clips/M
NEON-01C	13*13mm	Top Bending (Φ > 80-120mm)	6/8/10	/	chromatic (RGB or RGBW)	200~300	DC24V	DMX	36	standard 3pc clips/M
NEON-01D	16*16mm	Top Bending (Φ > 80-120mm)	10/12/15	>80	Mono 2700-6000K	700~1050	DC24V	ON/OFF	50	standard 3pc clips/M
NEON-01D	16*16mm	Top Bending (Φ > 80-120mm)	10/12/15	>80	Tunable white 2700-6000K	700~1050	DC24V	DMX	50	standard 3pc clips/M
NEON-01D	16*16mm	Top Bending (Φ > 80-120mm)	10/12/15	/	chromatic (RGB or RGBW)	300~450	DC24V	DMX	50	standard 3pc clips/M
NEON-01E	20*14mm	Top Bending (Φ > 80-120mm)	10/12/15	>80	Mono 2700-6000K	700~1050	DC24V	ON/OFF	50	standard 3pc clips/M
NEON-01E	20*14mm	Top Bending (Φ > 80-120mm)	10/12/15	>80	Tunable white 2700-6000K	700~1050	DC24V	DMX	50	standard 3pc clips/M
NEON-01E	20*14mm	Top Bending (Φ > 80-120mm)	10/12/15	/	chromatic (RGB or RGBW)	300~450	DC24V	DMX	50	standard 3pc clips/M
NEON-01F	20*20mm	Top Bending (Φ > 80-120mm)	10/12/15	>80	Mono 2700-6000K	700~1050	DC24V	ON/OFF	50	standard 3pc clips/M
NEON-01F	20*20mm	Top Bending (Φ > 80-120mm)	10/12/15	>80	Tunable white 2700-6000K	700~1050	DC24V	DMX	50	standard 3pc clips/M
NEON-01F	20*20mm	Top Bending (Φ > 80-120mm)	10/12/15	/	chromatic (RGB or RGBW)	300~450	DC24V	DMX	50	standard 3pc clips/M

▼ Naming scheme



▼ Cutting Method



Step 1: Where you see the cut line in the window, place the casing into the scissor opening.

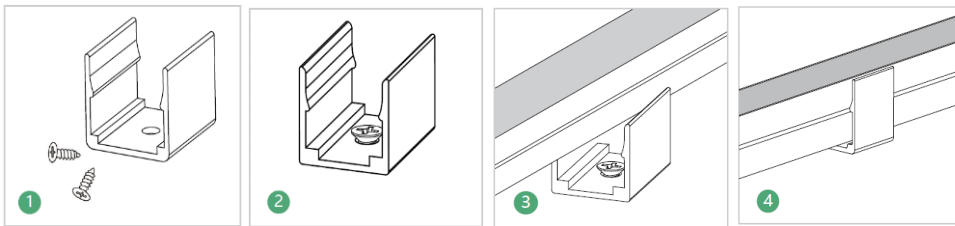
Step 2: Cut the casing with the scissors.

Step 3: After cutting.

Step 4: Finished.

▼ Available Accessories

Option 1: Short Aluminum Clip (1 meter with 5) (with screws)



Step 1: Prepare the screws and clips.

Step 2: Adjust the clips to the proper position. Use a screwdriver to drive in the screws to secure them.

Step 3: Place the light body with the light emitting side facing upwards and apply pressure. Installation is complete.

Step 4: Set the light bar into the snap.

Option 2: Aluminum Profile (with screws)

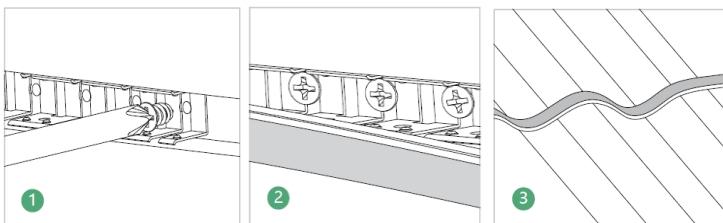


Step 1: Prepare the screws and profiles.

Step 2: Adjust the aluminium profile to the right place. Drive in the screws with a screwdriver.

Step 3: Set the light bar, luminous side up, into the aluminium profile.

Option 3: Flexible Stainless Steel Chain



Step 1: Fix the bendable profile with screws into the moulding groove opened beforehand.

Step 2: Install the light bar with its luminous side facing outwards into the slot for fixing.

Step 3: Completion of the installation

Option 4: End Cap Set (One End Cap+One Plug Straight Outlet)

Option 5: Metal End Cap Set (One End Cap+One Plug Straight Outlet)

▼ Project of Neon Top-Bending

