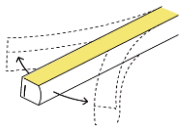




▼ Characteristic

Neon Flex Side Bend: Effortlessly Brilliant

1. Bend & Install Your Way: Whole or cut-to-size with no-fuss setup (maintains IP67 weatherproofing). Works even in extreme climates (-10° to +40°C).
2. Durable & Vibrant: Eco-friendly, UV-resistant construction ensures lasting brightness and beauty.
3. Flawless Linear Light: Delivers consistent illumination across the entire light surface.



▼ Application

!+ **Infrastructure:** Airport ,Railway Station ,Bridge , Municipal building ,Tunnel

!+ **Urban:** Administrative Building , Commercial Building , Hotel , Mall

!+ **Cultural and Entertainment:** Pavilion , Plaza ,Village ,Amusement park ,Monuments ,Cathedral ,Heritage site

▼ "Non-dim/dim" and "Mono/Tunable white/chromatic" is available, PIs confirm before ordering.



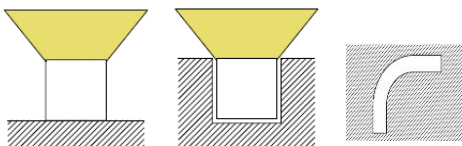
ON/OFF 0-10V DALI DMX TRIAC

▼ Family Matrix (Nine difference size)

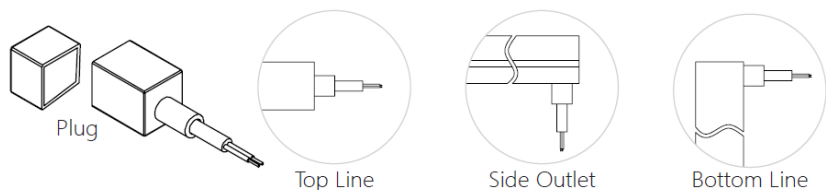
 NEON-03A	 NEON-03B	 NEON-03C	 Cutting 36mm Max Run 5m
 NEON-03D	 NEON-03E	 NEON-03F	 Cutting 50mm Max Run 5m

▼ Installation Method

1. Surface Mounted
2. Recessed Mounted



▼ Outlet Method

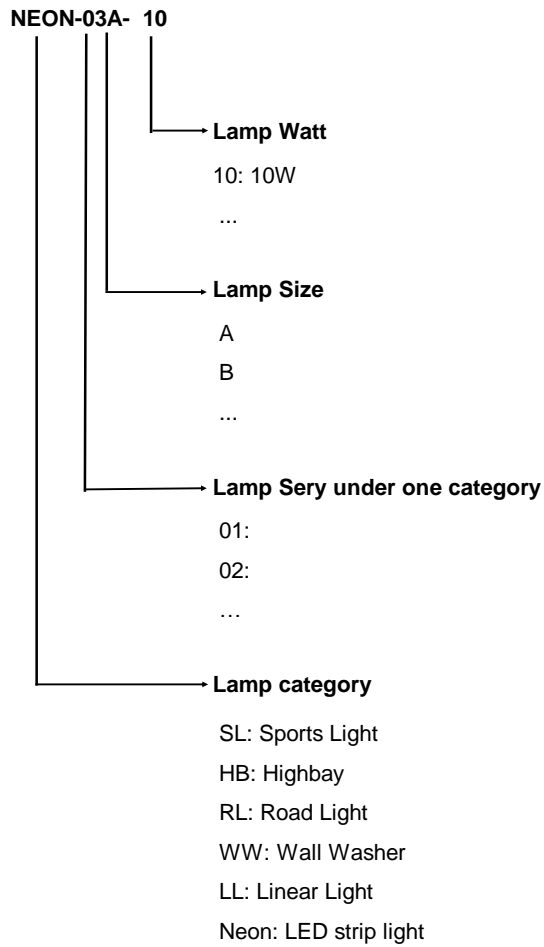


▼ Technical Data (full sery)

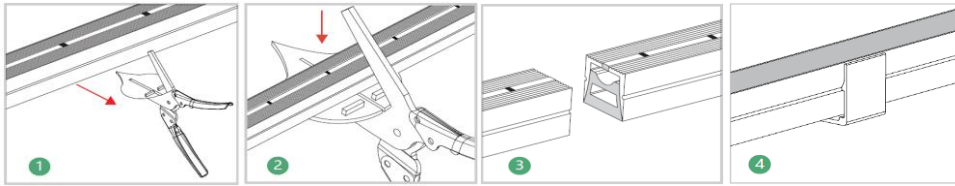
Model	SIZE (mm)	BENDING DIRECTION	POWER (W/M)	CRI	CCT (K)	LUMINOUS (LM/M)	VOLT	Control	CUTTING (mm)	Remark
NEON-03A	4*10mm	Side Bending (Φ > 60-80mm)	6/8/10	>80	Mono 2700-6000K	400-650	DC24V	ON/OFF	36	standard 3pc clips/M
NEON-03B	6*12mm	Side Bending (Φ > 60-80mm)	6/8/10	>80	Mono 2700-6000K	400-700	DC24V	ON/OFF	36	standard 3pc clips/M
NEON-03C	10*10mm	Side Bending (Φ > 60-80mm)	6/8/10	>80	Mono 2700-6000K	500-700	DC24V	ON/OFF	36	standard 3pc clips/M
NEON-03C	10*10mm	Side Bending (Φ > 60-80mm)	6/8/10	>80	Tunable white 2700-6000K	500-700	DC24V	DMX	36	standard 3pc clips/M
NEON-03C	10*10mm	Side Bending (Φ > 60-80mm)	6/8/10	/	chromatic (RGB or RGBW)	200-300	DC24V	DMX	36	standard 3pc clips/M
NEON-03D	10*18mm	Top Bending (Φ > 80-120mm)	10/12/15	>80	Mono 2700-6000K	700-950	DC24V	ON/OFF	50	standard 3pc clips/M
NEON-03D	10*18mm	Top Bending (Φ > 80-120mm)	10/12/15	>80	Tunable white 2700-6000K	700-950	DC24V	DMX	50	standard 3pc clips/M
NEON-03D	10*18mm	Top Bending (Φ > 80-120mm)	10/12/15	/	chromatic (RGB or RGBW)	300-450	DC24V	DMX	50	standard 3pc clips/M
NEON-03E	12*18mm	Top Bending (Φ > 80-120mm)	10/12/15	>80	Mono 2700-6000K	700-950	DC24V	ON/OFF	50	standard 3pc clips/M
NEON-03E	12*18mm	Top Bending (Φ > 80-120mm)	10/12/15	>80	Tunable white 2700-6000K	700-950	DC24V	DMX	50	standard 3pc clips/M
NEON-03E	12*18mm	Top Bending (Φ > 80-120mm)	10/12/15	/	chromatic (RGB or RGBW)	300-450	DC24V	DMX	50	standard 3pc clips/M
NEON-03F	12*20mm	Top Bending (Φ > 80-120mm)	10/12/15	>80	Mono 2700-6000K	700-950	DC24V	ON/OFF	50	standard 3pc clips/M
NEON-03F	12*20mm	Top Bending (Φ > 80-120mm)	10/12/15	>80	Tunable white 2700-6000K	700-950	DC24V	DMX	50	standard 3pc clips/M
NEON-03F	12*20mm	Top Bending (Φ > 80-120mm)	10/12/15	/	chromatic (RGB or RGBW)	300-450	DC24V	DMX	50	standard 3pc clips/M

Notes: Mono (2700K,3000K,3500K,4000K,4500K,5000K, Red, Green, Blue, Amber), Tunable White (2700K~5000K), Chromatic (RGB, RGBW)

▼ Naming scheme



▼ Cutting Method



Step 1: Where you see the cut line in the window, place the casing into the scissor opening.

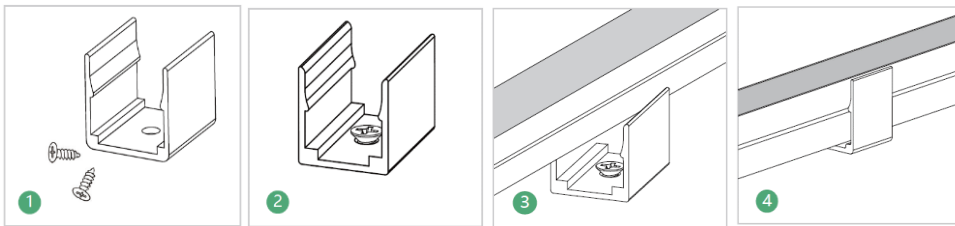
Step 2: Cut the casing with the scissors.

Step 3: After cutting.

Step 4: Finished.

▼ Available Accessories

Option 1: Short Aluminum Clip (1 meter with 5) (with screws)



Step 1: Prepare the screws and clips.

Step 2: Adjust the clips to the proper position. Use a screwdriver to drive in the screws to secure them.

Step 3: Place the light body with the light emitting side facing upwards and apply pressure. Installation is complete.

Step 4: Set the light bar into the snap.

Option 2: Aluminum Profile (with screws)

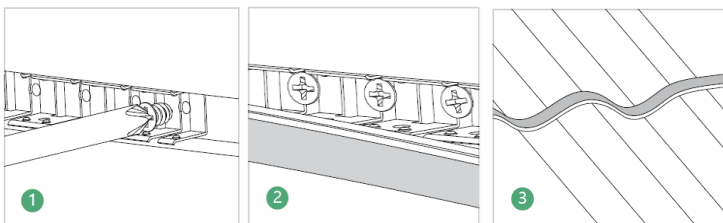


Step 1: Prepare the screws and profiles.

Step 2: Adjust the aluminium profile to the right place. Drive in the screws with a screwdriver.

Step 3: Set the light bar, luminous side up, into the aluminium profile.

Option 3: Flexible Stainless Steel Chain



Step 1: Fix the bendable profile with screws into the moulding groove opened beforehand.

Step 2: Install the light bar with its luminous side facing outwards into the slot for fixing.

Step 3: Completion of the installation

Option 4: End Cap Set (One End Cap+One Plug Straight Outlet)

Option 5: Metal End Cap Set (One End Cap+One Plug Straight Outlet)

▼ Technical Data

