

### ▼ Characteristic

Neon Flex T Shape Side Bend: Effortless Brilliance

1. Bend & Install: Whole or cut-to-size for a perfect fit (no extra parts, maintains IP67 weatherproofing). Flexible even in extreme weather (-10° to +40°C).

2. Durable & Compact: Eco-friendly materials and UV resistance for lasting beauty. T-shaped, 6mm light surface delivers flawless linear illumination.

3. Built Tough: IP67 rating protects against harsh environments: saltwater, chemicals, corrosion, flames, and UV rays.



### ▼ Application

↳ **Infrastructure:** Airport ,Railway Station ,Bridge , Municipal building ,Tunnel

↳ **Urban:** Administrative Building , Commercial Building , Hotel , Mall

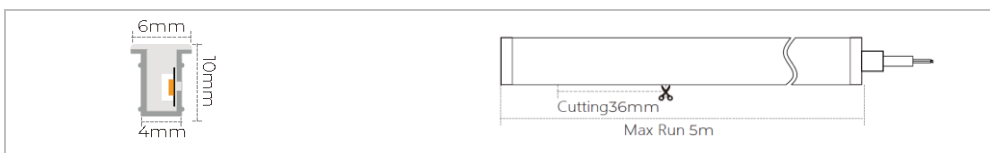
↳ **Cultural and Entertainment:** Pavilion , Plaza ,Village ,Amusement park ,Monuments ,Cathedral ,Heritage site

▼ "Non-dim/dim" and "Mono/Tunable white/chromatic" is available, PIs confirm before ordering.



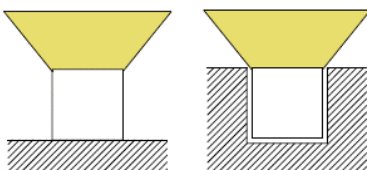
**ON/OFF 0-10V DALI DMX TRIAC**

### ▼ Family Matrix (One difference size)

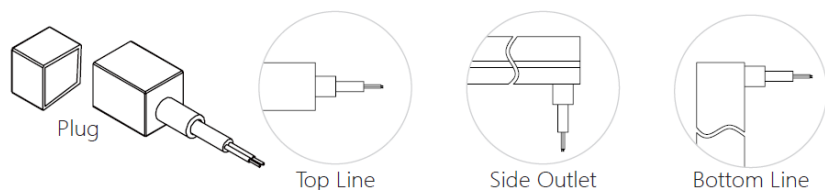


### ▼ Installation Method

1. Surface Mounted    2. Recessed Mounted



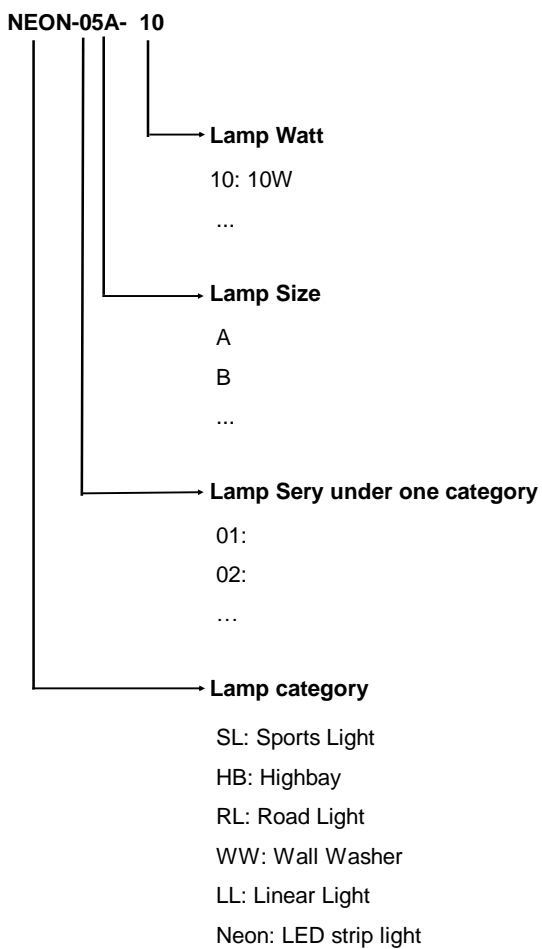
### ▼ Outlet Method



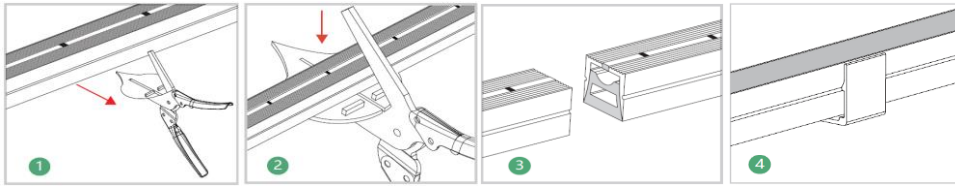
### ▼ Technical Data (full sery)

Model	SIZE (mm)	BENDING DIRECTION	POWER (W/M)	CRI	CCT (K)	LUMINOUS (LM/M)	VOLT	Control	CUTTING (mm)	Remark
NEON-05A	4*10mm	Side Bending	6/8/10	>80	Mono 2700-6000K	500-700	DC24V	ON/OFF	36	standard 3pc clips/M

### ▼ Naming scheme



### ▼ Cutting Method



Step 1: Where you see the cut line in the window, place the casing into the scissor opening.

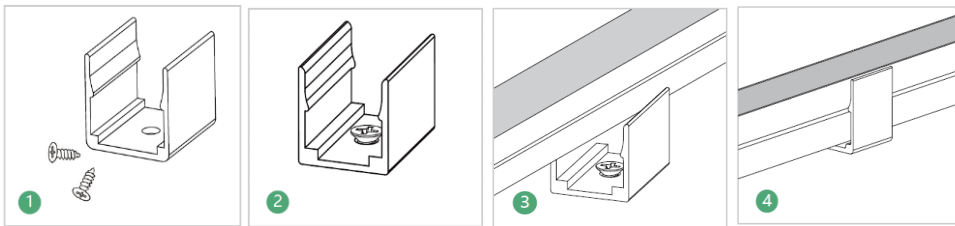
Step 2: Cut the casing with the scissors.

Step 3: After cutting.

Step 4: Finished.

### ▼ Available Accessories

#### Option 1: Short Aluminum Clip (1 meter with 5) (with screws)



Step 1: Prepare the screws and clips.

Step 2: Adjust the clips to the proper position. Use a screwdriver to drive in the screws to secure them.

Step 3: Place the light body with the light emitting side facing upwards and apply pressure. Installation is complete.

Step 4: Set the light bar into the snap.

#### Option 2: Aluminum Profile (with screws)

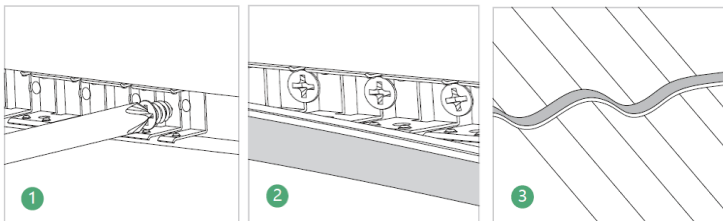


Step 1: Prepare the screws and profiles.

Step 2: Adjust the aluminium profile to the right place. Drive in the screws with a screwdriver.

Step 3: Set the light bar, luminous side up, into the aluminium profile.

#### Option 3: Flexible Stainless Steel Chain



Step 1: Fix the bendable profile with screws into the moulding groove opened beforehand.

Step 2: Install the light bar with its luminous side facing outwards into the slot for fixing.

Step 3: Completion of the installation

#### Option 4: End Cap Set (One End Cap+One Plug Straight Outlet)

#### Option 5: Metal End Cap Set (One End Cap+One Plug Straight Outlet)