

▼ Characteristic

1. Flexibility
 - Constructed with high-flexibility TPU material, allowing both horizontal and vertical bending.
 - Perfect for curves, columns, and irregular surfaces, supporting creative lighting designs.
2. Length Customization
 - Available in customized lengths up to 20 meters, minimizing joints and ensuring seamless light distribution.
 - Tailored to fit complex installations with ease.
3. Uniform Lighting Effect
 - Built-in high-brightness LED chips paired with professional optical design, ensuring soft and uniform wall-washing effects with no dark spots.
4. High Waterproof Rating
 - Double-sealed design with IP67 protection, making it suitable for wet, dusty, or extreme outdoor environments.
5. Easy Installation
 - Lightweight design with flexible mounting brackets and multiple fixing options for quick and hassle-free installation.



▼ Application

↳ **Infrastructure:** Airport ,Railway Station ,Bridge , Municipal building ,Tunnel

↳ **Urban:** Administrative Building , Commercial Building , Hotel , Mall

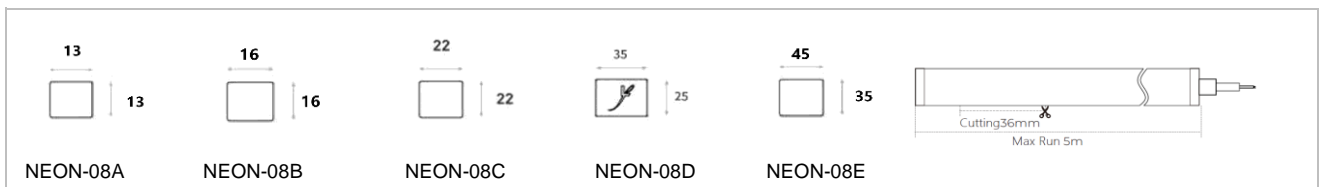
↳ **Cultural and Entertainment:** Pavilion , Plaza ,Village ,Amusement park ,Monuments ,Cathedral ,Heritage site

▼ "Non-dim/dim" and "Mono/Tunable white/chromatic" is available, Pls confirm before ordering.



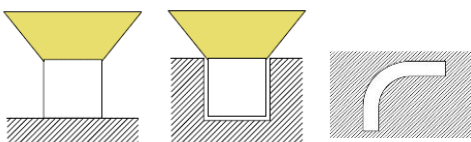
ON/OFF 0-10V DALI DMX TRIAC

▼ Family Matrix (Five difference size)

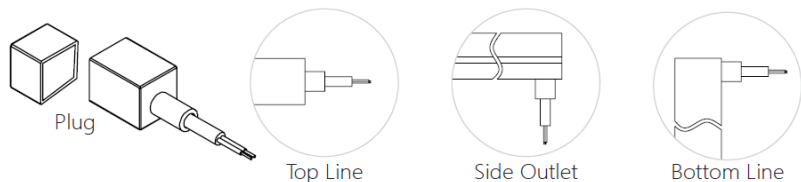


▼ Installation Method

1. Surface Mounted
2. Recessed Mounted



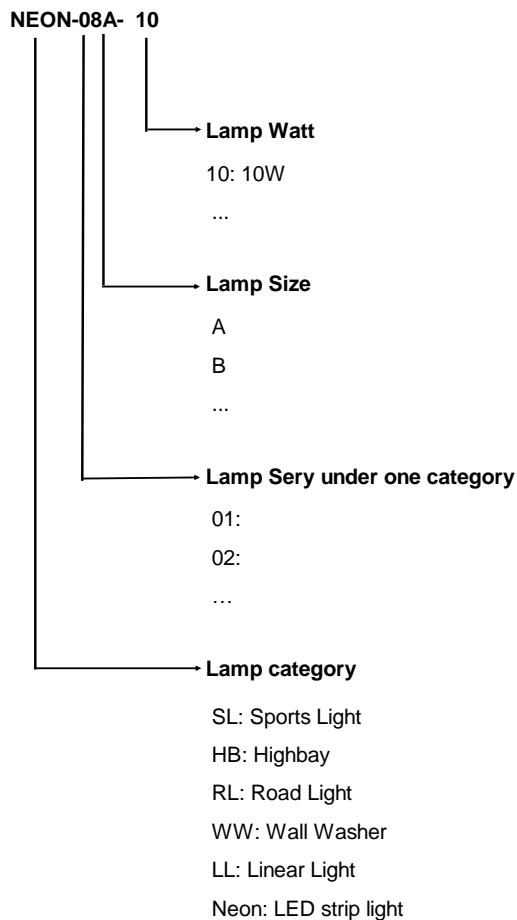
▼ Outlet Method



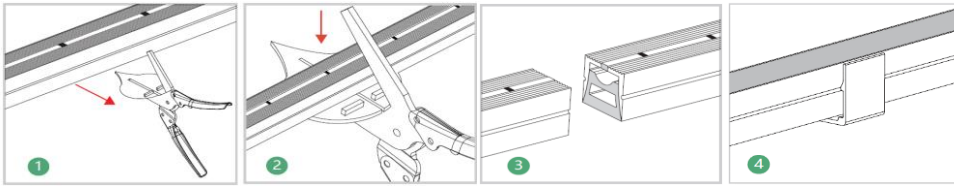
▼ Technical Data (full sery)

Model	SIZE (mm)	BENDING DIRECTION	POWER (W/M)	CRI	CCT (K)	LUMINOUS (LM/M)	Beam Angle	VOLT	Control	Remark
NEON-08A	13*13mm	Side Bending	15	>80	Mono 2700-6000K	480	30°,45°,60°	DC24V	ON/OFF	
NEON-08A	13*13mm	Side Bending	15	/	chromatic (RGB or RGBW)	540	30°,45°,60°	DC24V	DMX	
NEON-08B	16*16mm	Side Bending	18	>80	Mono 2700-6000K	576	30°,45°,60°	DC24V	ON/OFF	
NEON-08B	16*16mm	Side Bending	18	/	chromatic (RGB or RGBW)	648	30°,45°,60°	DC24V	DMX	
NEON-08C	22*22mm	Side Bending	24	>80	Mono 2700-6000K	768	20°,40°,40x25°,20x50°	DC24V	ON/OFF	
NEON-08C	22*22mm	Side Bending	24	/	chromatic (RGB or RGBW)	864	20°,40°,40x25°,20x50°	DC24V	DMX	
NEON-08D	35*25mm	Side Bending	24	>80	Mono 2700-6000K	768	20°,30°,60°,20x45°	DC24V	ON/OFF	
NEON-08D	35*25mm	Side Bending	24	/	chromatic (RGB or RGBW)	864	20°,30°,60°,20x45°	DC24V	DMX	
NEON-08E	45*35mm	Side Bending	24	>80	Mono 2700-6000K	768	20°,30°,60°,20x45°	DC24V	ON/OFF	
NEON-08E	45*35mm	Side Bending	24	/	chromatic (RGB or RGBW)	864	20°,30°,60°,20x45°	DC24V	DMX	

▼ Naming scheme



▼ Cutting Method



Step 1: Where you see the cut line in the window, place the casing into the scissor opening.

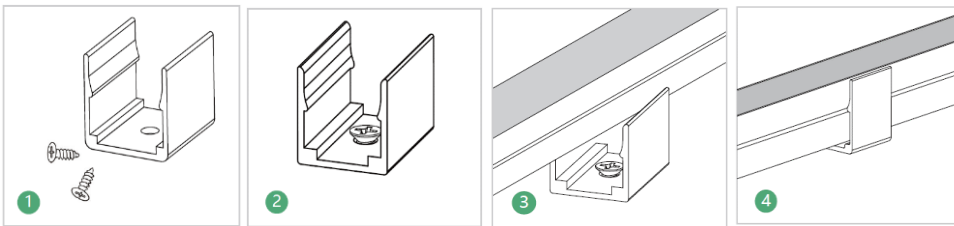
Step 2: Cut the casing with the scissors.

Step 3: After cutting.

Step 4: Finished.

▼ Available Accessories

Option 1: Short Aluminum Clip (1 meter with 5) (with screws)



Step 1: Prepare the screws and clips.

Step 2: Adjust the clips to the proper position. Use a screwdriver to drive in the screws to secure them.

Step 3: Place the light body with the light emitting side facing upwards and apply pressure. Installation is complete.

Step 4: Set the light bar into the snap.

Option 2: Aluminum Profile (with screws)

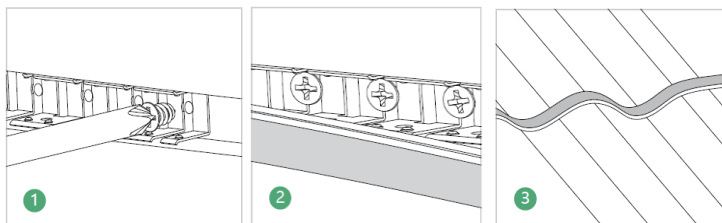


Step 1: Prepare the screws and profiles.

Step 2: Adjust the aluminium profile to the right place. Drive in the screws with a screwdriver.

Step 3: Set the light bar, luminous side up, into the aluminium profile.

Option 3: Flexible Stainless Steel Chain



Step 1: Fix the bendable profile with screws into the moulding groove opened beforehand.

Step 2: Install the light bar with its luminous side facing outwards into the slot for fixing.

Step 3: Completion of the installation

Option 4: End Cap Set (One End Cap+One Plug Straight Outlet)

Option 5: Metal End Cap Set (One End Cap+One Plug Straight Outlet)

▼ Project of Flex Wall Washer

